

# NEOTIMBER'S CAPPED COMPOSITE BALUSTRADES

NeoTimber's composite balustrade range is a smarter, longer-life alternative to timber - no rot, no splinters, and superior fade and stain resistance. Our balustrades come in eight premium colours co-ordinated with our complete range of capped composite deck boards, adding a perfect blend of safety and style to your decking area.

Built to rigorous standards, the system meets BS 6180:2011 building regulations, ensuring it is a strong and reliable option for low-level residential (and select commercial) applications.



## WHY CHOOSE NEOTIMBER COMPOSITE BALUSTRADES?



### EIGHT PREMIUM COLOUR OPTIONS

The NeoTimber® balustrade system comes in a selection of eight colours that perfectly compliment our range of capped decking products. This variety in colour offers the ability to both match your deck colour for a monochromatic look or compliment contrasting colour options.

### ENHANCED FADE, STAIN, SPLINTER RESISTANCE AND PROTECTION

Timber handrails tend to succumb to the harsh conditions of the outdoors. Splintering, rotting, staining and fading are all problems that are experienced overtime. A capped composite solution with aluminium posts inserts and spindles expertly negates these issues.



### DEDICATED COMPONENTS FOR ULTIMATE FLEXIBILITY

Designed to offer ease of installation in the widest variety of situations, NeoTimber® balustrade post and railing sets are available in both Straight and Stair variations. Each option is pre-cut and supplied with the relevant fixings for the dedicated application, making installation quick and easy.

## TECHNICAL SPECIFICATIONS

### LOW MAINTENANCE



### STAIN RESISTANCE



### FADE RESISTANCE



## LOAD TEST RESULTS

### BS 6180:2011 – (i)

Domestic & Residential Activities: All areas within or serving exclusively one single family dwellings including stairs, landings etc. but excluding external balconies and edges of roofs.

Horizontal uniformly distributed line load: No Failure @ 0.36kN/m  
Uniformly distributed load applied to the infill: No Failure @ 0.5kN/m  
A point load applied to part of the infill: No Failure @ 0.25kN

### BS 6180:2011 – (iii)

Offices and work areas not included elsewhere, including storage areas: Light access stairs and gangways not more than 600 mm wide.

Horizontal uniformly distributed line load: No Failure @ 0.36kN/m  
Uniformly distributed load applied to the infill: No Failure @ 0.5kN/m  
A point load applied to part of the infill: No Failure @ 0.25kN

### BS 6180:2011 – (iv)

Offices and work areas not included elsewhere, including storage areas: Light pedestrian traffic routes in industrial and storage buildings except designated escape routes.

Horizontal uniformly distributed line load: No Failure @ 0.36kN/m  
Uniformly distributed load applied to the infill: No Failure @ 0.5kN/m  
A point load applied to part of the infill: No Failure @ 0.25kN

### ASTM D7032-17 Concentrated Load

Top rail midspan: No failure @ 500lbf (2224N)  
Top rail adjacent to post: No failure @ 500lbf (2224N)  
Top of post: No failure @ 500lbf (2224N)

### ASTM D7032-17 Uniform Load

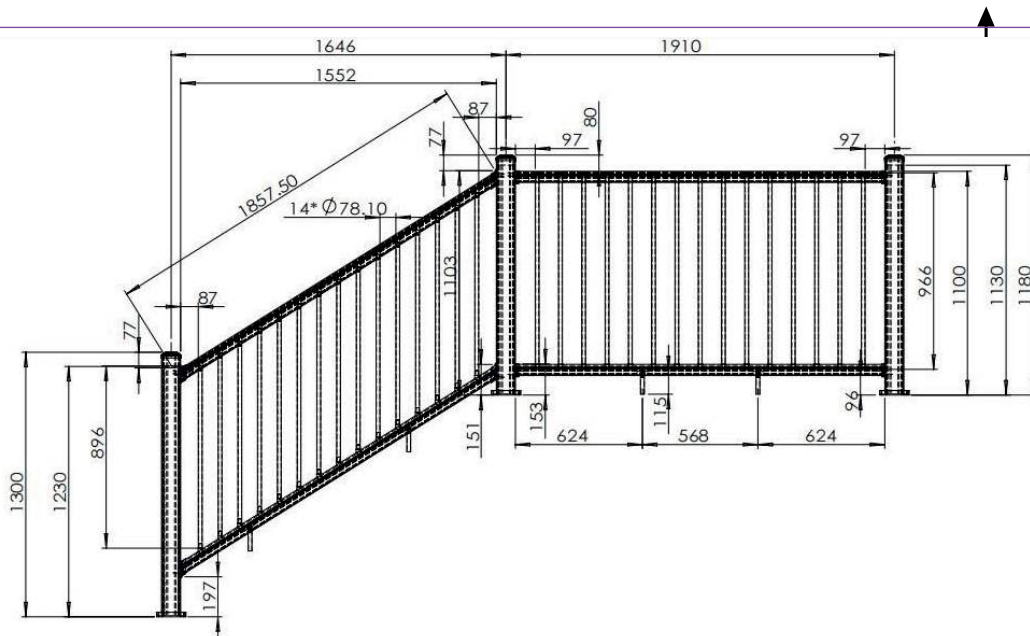
Vertical load: No failure @ 125plf (1825N)  
Horizontal load: No failure @ 125plf (1825N)

### ASTM D7032-17 In-Fill Load

Centre of rail: No failure @ 125 lbf (556N)  
Left bottom rail: No failure @ 125lbf (556N)  
Right top rail: No failure @ 125lbf (556N)

All results based on the correct installation of the full NeoTimber balustrade system including railing and posts.

## BALUSTRADE DIMENSIONS



## OUR BALUSTRADE COLOURS



Grey



Charcoal



Antique



Teak



Chocolate



Ash White



Oak



Silver Birch

## DESIGN & BUILD YOUR BALUSTRADE SOLUTION

NeoTimber's flexible system gives you the ability to configure system components based on your specific design. Rail sets and individual posts can be purchased as individual parts in order to reduce wastage and cater for whatever your design requires.



Composite Balustrade Post  
(Stair or Straight)

**Dimensions:**

Stair: 1300mm (h) x 94mm (w)  
Straight: 1180mm (h) x 94mm (w)

**Each Set Includes:**

Post, steel insert, cap, skirt and all fixings.



Composite Balustrade Railing  
(Stair or Straight)

**Dimensions:**

Stair: 1857.5mm (w) x 1230mm (h)  
with 19mm spindles  
Straight: 1816mm (w) x 1100mm (h)  
with 19mm spindles

**Each Set Includes:**

Handrail, bottom rail, spindles and all fixings.



Composite Balustrade Gate

**Dimensions:**

1068mm (w) x 873mm (h) with 19mm spindles

**Each Set Includes:**

Gate, hinges, lock, and all fixings.

Need help?

Call us on 01530 382 180

or email [enquiries@neotimber.com](mailto:enquiries@neotimber.com)